



# The Rose

THE SAINT THERESE NEWSLETTER

*thank*

*thank you!*



**FROM THE BOTTOM OF OUR HEARTS**

**INSIDE:** COVID-19 RESPONSE | COMMUNITY SUPPORT | GRATITUDE REPORT

WINTER 2021

RESILIENCE

and gratitude

**Dear Friends,**

As I reflect back on 2020 and look forward to what 2021 holds, two words come to mind: resilience and gratitude.

2020 was a year that tested so many of us, but amongst all the challenge and hardship, there was plenty to celebrate and so much to be thankful for.

Our community stepped up for Saint Therese in so many ways. Our employees went the extra mile day after day to care for our residents. You, our supporters, sewed masks, donated meals, wrote letters of encouragement and said prayers for our residents and staff.

For the first time ever, you “attended” our virtual golf and gala events raising thousands in support of our mission.

Furthermore, 2020 was a special year for me, personally. I celebrated my 20th anniversary serving Saint Therese and our residents and was humbled by the announcement of an endowed fund created in my name.

Thanks to you, nearly \$100,000 was raised for the Barbara A. Rode Endowed Fund for Quality Care and Innovation. I am excited to see this fund continue to grow and support initiatives that will make such a difference for the residents in our care.

Moving in to 2021, I am excited for what the future holds for Saint Therese and am so thankful that you are on this journey with us. We have lots to share in this new, improved issue of *The Rose* newsletter and welcome your feedback.

With warmest gratitude,



Barbara A. Rode  
President and CEO, LNHA, MS, NCBC



*Save the Date*

**Golf Tournament, Medina Golf & Country Club:** June 21, 2021

**Virtual Foundation Gala:** October 2021



Carol, a resident at Saint Therese at Oxbow Lake, eagerly took the vaccine.

**“Because of my health it was important for me to get it.”**

## A huge step forward in BEATING COVID-19

**291 days.** That’s how long it took for the wait for a vaccine to finally be over for our residents and staff. On Monday, December 28th, we took a huge step forward in beating COVID-19 by holding our first vaccine clinic at Saint Therese of Woodbury. This momentous day was filled with many emotions — joy, hope and, most of all, gratitude.

It’s hard to describe the magnitude of this day and Marilyn Ramirez, Chief Nursing Officer for Saint Therese, said it best “We’re grateful for this day. We’re excited for what is to come. There is some hope in the future.”

Throughout the months of January and February, each of our communities held up to three vaccine clinics to ensure the successful administration of the vaccine to as many residents and staff as possible. The reasons to receive the vaccine are many.

This next chapter in our

fight against COVID-19 is a ray of hope for many of us, but especially for the older adults we serve who have been so cut off from their family and friends over these past many months.

It is, however, just the beginning of a conversation about reopening our communities. As of February 22nd, we have not received word of any updated guidance from the State about expanded visitation in our communities. As soon as the vaccine is successfully administered throughout Minnesota and positivity rates begin to fall, we hope we can begin to open our communities to more safe and socially distanced visitation for our residents.

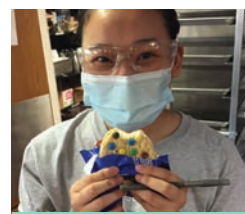


Justin began working at Saint Therese of New Hope in dining services in 2005. His extended family lives in Africa. **“It’s important for my community, for the residents, for the entire US. It will get us back to traveling and seeing our families.”**



## AN UNBELIEVABLE SHOW OF COMMUNITY SUPPORT — THANK YOU!

While we know the word unprecedented has been overused, there is no other word to describe the way our community has stepped up to support Saint Therese over the past year, and we are deeply grateful. We are excited to share just a few of the many ways you have helped us weather a challenging year. From the bottom of our hearts, thank you. **We couldn't have done it without you.**



## MASKS, GOWNS, AND MEALS OH MY!

While volunteers and our other supporters were unable to be on our campuses, you wasted no time in pitching in to make a difference for our residents. From cookie deliveries to craft projects to practical items like hand sanitizer, we were simply overwhelmed by your outpouring of support. Here is just a sampling of the many items and gifts of time that have been donated over the past 11 months:

- Nearly 5,000 homemade face masks were lovingly sewed and donated.
- More than 800 washable and reusable isolation gowns were created.
- A MULTITUDE of cards with wishes of good health, cheer and encouragement

have been created by volunteers and the greater community. The children's art and messages have been especially treasured by our seniors!

- Hundreds of face shields and thousands of surgical face masks were donated to Saint Therese by individuals, community groups, small businesses and corporations. One donation came from as far away as Taiwan!
- Donations to brighten an especially tough holiday season for our residents — stuffed Christmas stockings, gifts, Christmas décor and carols.
- And so much more...especially the priceless gift of your prayers.

# LOOK GOOD, FEEL GOOD, DO GOOD

HELEN



BEFORE

AFTER

KAY



BEFORE

AFTER

LOIS



BEFORE

AFTER

For four months, our on-site beauty salons were closed due to COVID-19 restrictions which meant most of our residents had to go without their regular haircuts, nail services or other feel good treatments. Thanks to a generous donation, we celebrated the reopening of the beauty salon at Saint Therese of New Hope with

free surprise services to many of our care center and apartment residents. Many of you contributed additional funds to support our COVID-19 relief efforts during this fun and special week. Enjoy a few before and after photos that were made possible by this wonderful gift!



## HONORING OUR SENIOR CARE HEROES

In addition to the many ways you supported our residents, you also helped us thank and honor our incredibly committed staff. During this time, our employees have served as more than caregivers — they have been a listening ear, a shoulder to cry on and a constant companion to our residents. And with your help, we have been able to show them the appreciation they deserve.

We're proud to support Saint Therese

Together we're sparking lives and empowering those we serve to age magnificently.



Whole Person Senior Services

952-345-8770 | [Lifesprk.com](https://www.Lifesprk.com)



• 2020 •

# SAINT THERESE FOUNDATION GALA

Due to the COVID-19 pandemic, our annual Gala moved to an online format for 2020. On October 22nd, we streamed our first ever virtual Gala complete with an opening prayer by Archbishop Bernard Hebda, lively jazz entertainment and a program to honor Barb Rode's 20 years of service with Saint Therese. Through this reimagined event, we created an occasion for our residents, families, staff and supporters who were all physically apart to still be part of something together.

Thank you to everyone who sponsored, donated and tuned in to the event, making it a huge success.

At the virtual Gala, Board Chair, Pat Taffe, announced the Barbara A. Rode Endowed Fund for Quality Care and Innovation. We were happy to see that Barb's life-time commitment to serving seniors inspired you. **Together, we raised almost \$100,000 for future mission-driven initiatives** that continue Barb's passion for quality care and innovation at Saint Therese.



## Golf Fore Saint Therese

Despite the challenges of COVID-19, in August we held Golf Fore Saint Therese, a week-long golf event with a mix of virtual engagement and in-person golfing. Participants played a round of golf on a course of their choosing or sponsored a team or the event. **Our supporters raised more than \$26,000 to help us weather the financial impact of COVID-19.**

Congratulations to the winning team:  
CareAparent

PROUD SPONSOR: Saint Therese

**ZIEGLER SENIOR LIVING FINANCE**

- Investment Banking
- Financial Risk Management
- Dispositions, Mergers & Acquisitions
- Sponsorship Transitions
- Seed Capital
- FHA/HUD Mortgage Banking
- Capital & Strategic Planning
- Research, Education & Thought Leadership

**AARON SCHROEDER**  
Director  
aschroeder@ziegler.com  
414 978 6407

**Ziegler**  
CAPITAL :: INVESTMENTS :: ADVICE

Investment banking services offered through B.C. Ziegler and Company PRA mortgage banking services are provided through Ziegler Financing Corporation, which is not a registered broker-dealer. Ziegler Financing Corporation and B.C. Ziegler and Company are affiliated and related firms that may be paid by either entity for services provided. ©2021 B.C. Ziegler and Company | Member SIPC & FINRA

*Providing Quality Housing for our Seniors*

CBS Construction Services, Inc., General Contractor for St. Therese of Woodbury Phases I and II

**CBS Construction Services, Inc.**  
*Building Value With Integrity*

Independent Living • Assisted Living • Skilled Care • Memory Care • Transitional Care

**PROUD SUPPORTER OF ST. THERESE FOUNDATION**

**GOODIN COMPANY**

[www.goodinco.com](http://www.goodinco.com)

*Better Health through Better Plumbing & Heating*



# Gratitude Report

With your support, Saint Therese continues to do ordinary things with extraordinary love for the residents we serve and their families. We are so grateful for the many ways our community has stepped up and are pleased to share information on our work with you.

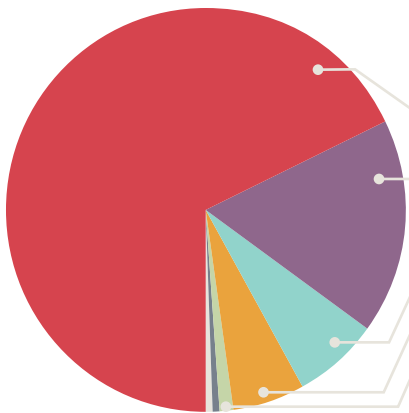
Total funds raised: **\$1,368,182** (includes an estate gift)

July 1, 2019 - December 31, 2020



## WHERE YOU SUPPORTED

July 1, 2019 - December 31, 2020

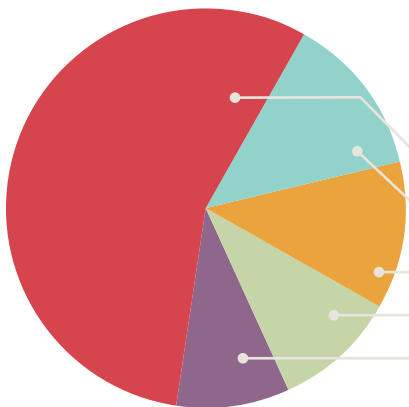


- 68% Saint Therese of New Hope\*
- 17% Saint Therese Foundation
- 7% Saint Therese of Woodbury
- 6% Saint Therese at Oxbow Lake
- 1% Saint Therese at St. Odilia
- <1% Ascend Rehabilitation
- <1% Transitional Care by Saint Therese

*\*includes an estate gift and gifts to the Saint Therese of New Hope capital campaign*

## HOW WE INVEST IN OUR COMMUNITIES

July 1, 2019 - June 30, 2020



- 56% Resident programs
- 13% Administrative and general
- 12% Depreciation and interest
- 10% Team benefits and payroll tax
- 9% Plant operations and property expense

Our donor list is available online at [sainttherese.org/annual-report](https://sainttherese.org/annual-report). To ensure that we express our gratitude to all of our recent supporters, we are sharing data from the last 18 months. For a printed copy, please call our staff at 952.283.2212.



# Saint Therese

1660 South Highway 100, Suite 103  
Saint Louis Park, Minnesota 55416

NON-PROFIT  
ORGANIZATION  
U.S. POSTAGE  
PAID  
TWIN CITIES, MN  
PERMIT #32674

<<Addressee1>>  
<<Addressee2>>  
<<Address1>>  
<<Address2>>  
<<City>>, <<State>> <<ZIP>>



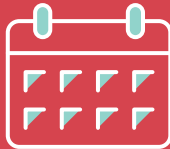
We are excited to announce the Saint Therese Giving Circle. This special giving society recognizes and thanks our most loyal and generous donors. As a Giving Circle member, you will join a like-minded group of donors committed to our mission to serve older adults and their families. You may already be a member! If not, we hope you will join us with a gift or commitment today!

## HOW TO BECOME A MEMBER



### Heritage Society

Include us in your will, trust, estate or other bequests.



### Monthly Giving

Commit to ongoing, monthly gifts.



### Cumulative Giving

Give \$500 or more in a fiscal year (July 1-June 30).



### Loyal Giving

Give in two or more consecutive fiscal years (July 1-June 30).

[sainttherese.org/give](http://sainttherese.org/give)

For more information, stay tuned to Saint Therese Foundation communications or contact Meghan Bethke Stark, Vice President of Philanthropy, at 952-283-2217 or [meghanb@sainttherese.org](mailto:meghanb@sainttherese.org).

If you would like to be removed from this mailing list please call 952.283.2212.